



BELLE
LIGHT
CONSTRUCTION
EQUIPMENT



Altrad-Belle.com

PCLX 32s

'STREETWORKS' FORWARD PLATE COMPACTOR

Professional single direction plate compactor with over 1400kg/m² of compaction, exceeding the HAUC requirements for the reinstatement of footpaths.

With low Hand Arm Vibration and high performance compaction from the 13kN vibrator, this robust compactor is designed for contracting and rental use.



BUILDING A SUSTAINABLE FUTURE.

FEATURES & BENEFITS

- Low Hand-Arm Vibration design for longer safe usage times.
- 'Dual Force' base plate provides added compaction to meet UK HAUC requirements.
- The baseplate is made from Strenx™ performance steel with a Hardox® wear plate for added strength and durability.
- Powerful, reliable Honda GX120 petrol engine.
- High performance 13kN vibration unit gives excellent compaction force and travel speeds.
- Tubular frame designed to protect vulnerable components.
- Lightweight yet durable for easy transport.
- Fitted with manual handling points.
- Engineered to be robust and durable for rental and heavy contractor usage.
- Improved productivity with fast travel speeds.
- Optional, removable 12-litre water tank features a quick-release design.
- Customer colour options available.



8HRS+ SAFE MACHINE



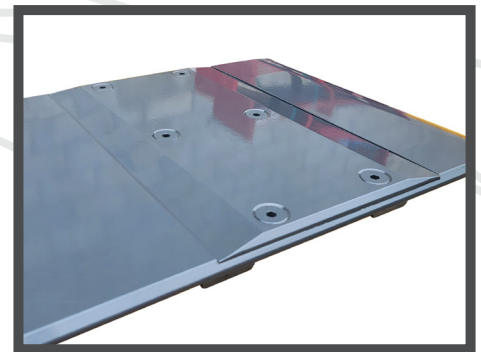
OPTIONAL 12 LTR QUICK-RELEASE WATER TANK

TECHNICAL SPECIFICATIONS

Model	PCLX 32S Honda GX 120	
Part No.		LX3271
Width	(mm)	320
Operating Height	(mm)	936
Operating Length	(mm)	835
Storage Height	(mm)	640.5
Storage Length	(mm)	775
Engine Power	(Hp / kW)	3.2 / 2.4
Engine RPM		3850
Weight	(kg)	67
Static Pressure	(kg/m ²)	1662
Centrifugal Force	(kN)	13
Travel Speed	(m/min)	18
Vibration level	(m/sec ²)	2.26
Sound Power Level	(dB LWA)	105

Options

OPP/57S/DIO PCLX 32S Water Spray Kit



'DUAL FORCE' BASEPLATE FROM STRENX™ PERFORMANCE STEEL WITH HARDOX® WEAR PLATE



STRENX®
PERFORMANCE STEEL

HARDOX®
WEAR PLATE

